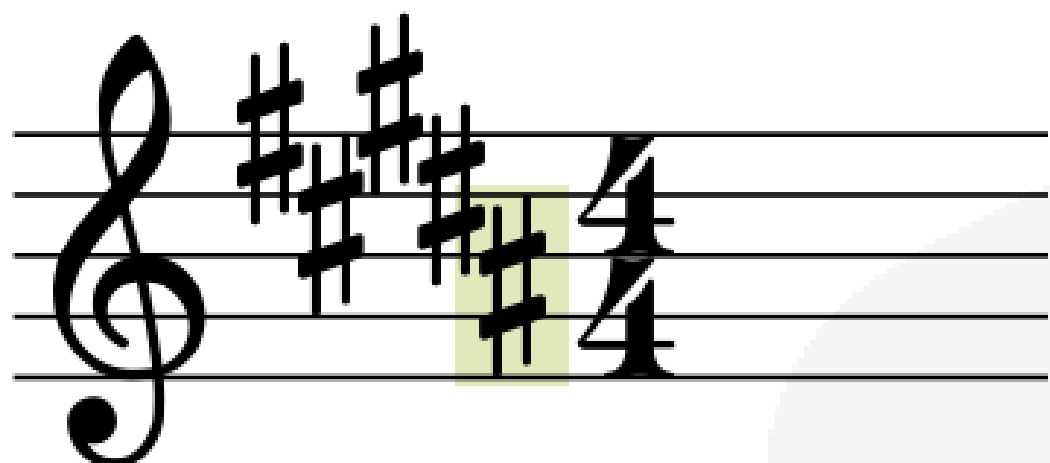


MAJOR KEY SIGNATURE MEMORIZATION TRICKS

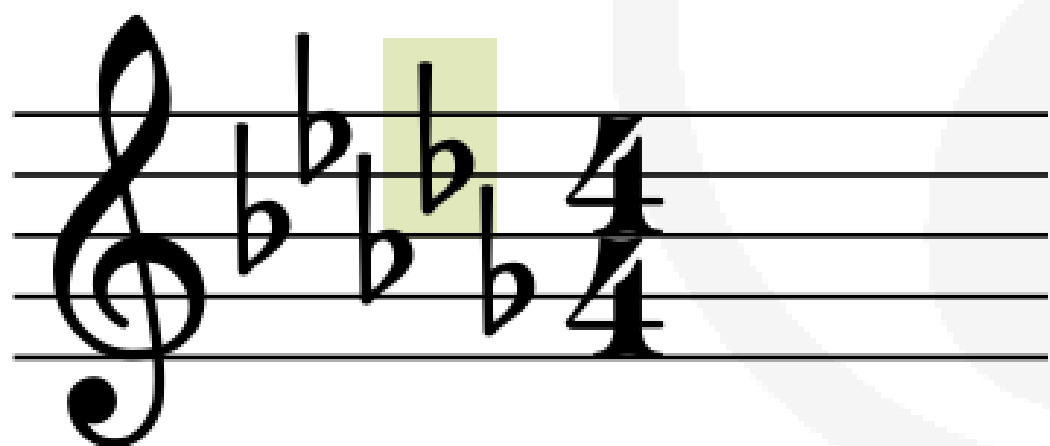


In SHARP keys...

Look to the furthest sharp on the right and go up one half step.

One half step up from A Sharp is B, therefore the key is

B Major



In FLAT keys...

Look to the second flat from the right to determine the key.

The second flat from the right is D Flat, therefore the key is

D Flat

*The exception to these tricks are F Major, which consists of only one flat (B Flat), and C Major, which has no sharps or flats.