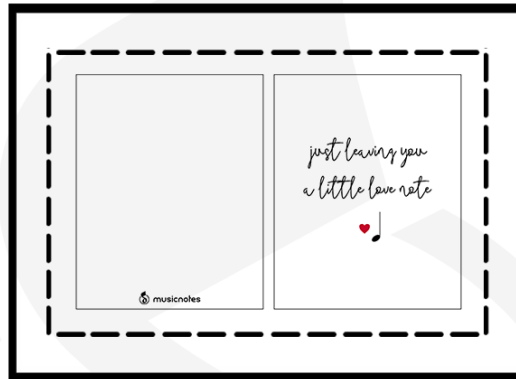


MUSICNOTES VALENTINE'S DAY CARDS  
***INSTRUCTIONS***

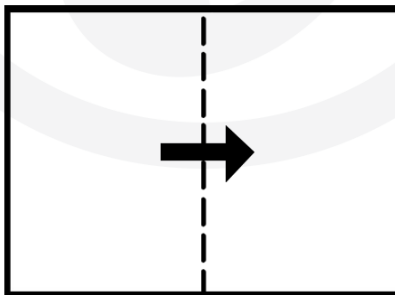
*For best results, print on paper with a heavier weight.*

**1. CUT ON THE DOTTED LINES**  -----



**2. FLIP THE PIECES OVER SO THAT THE DESIGN IS ON THE BACK**

**3. FOLD THE PIECES IN HALF TO MAKE THE CARD**



**4. ENJOY YOUR VALENTINES!**



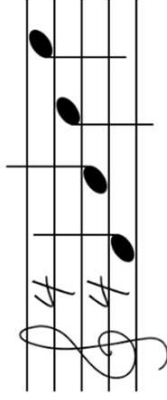
will you

mine?

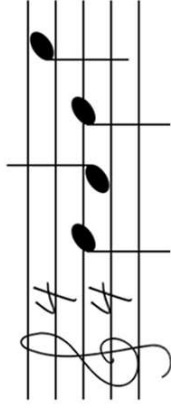
hold mi



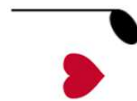
*i like you*



*ans*




just leaving you  
a little love note



YOU HIT ALL THE RIGHT

notes





i pick you



ARE YOU A **V-I** ROOT POSITION CADENCE?

BECAUSE YOU'RE

*perfect*

*i want you bach*



*you're too hot*



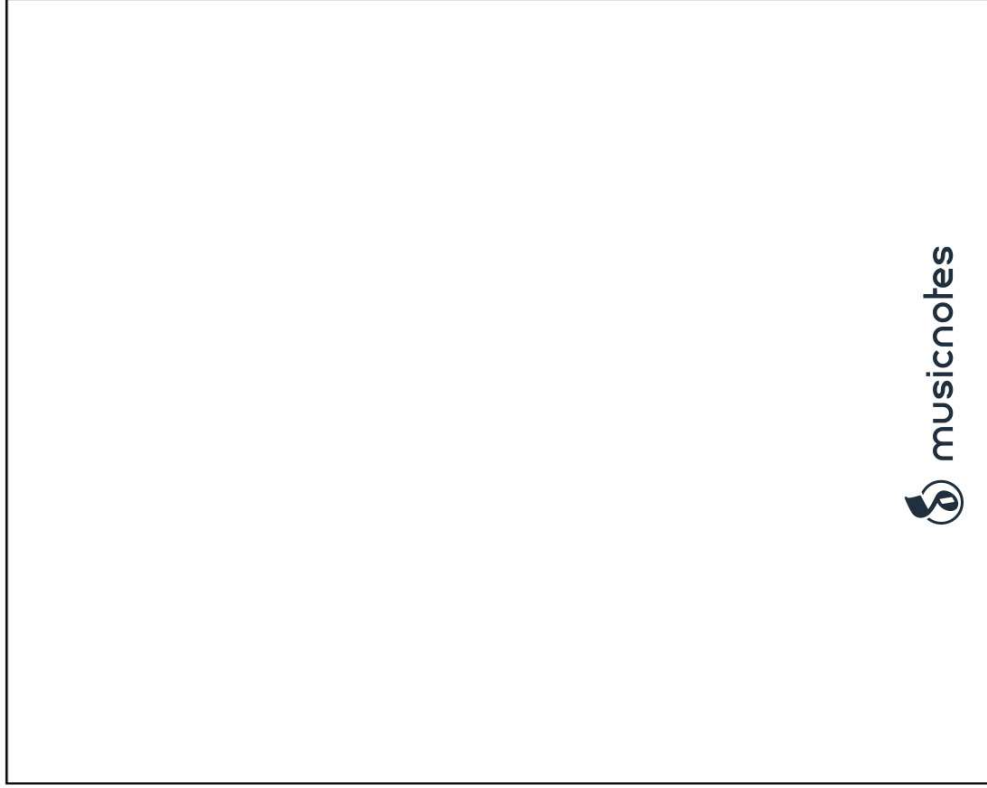
*to Handel*

*do i like you?*

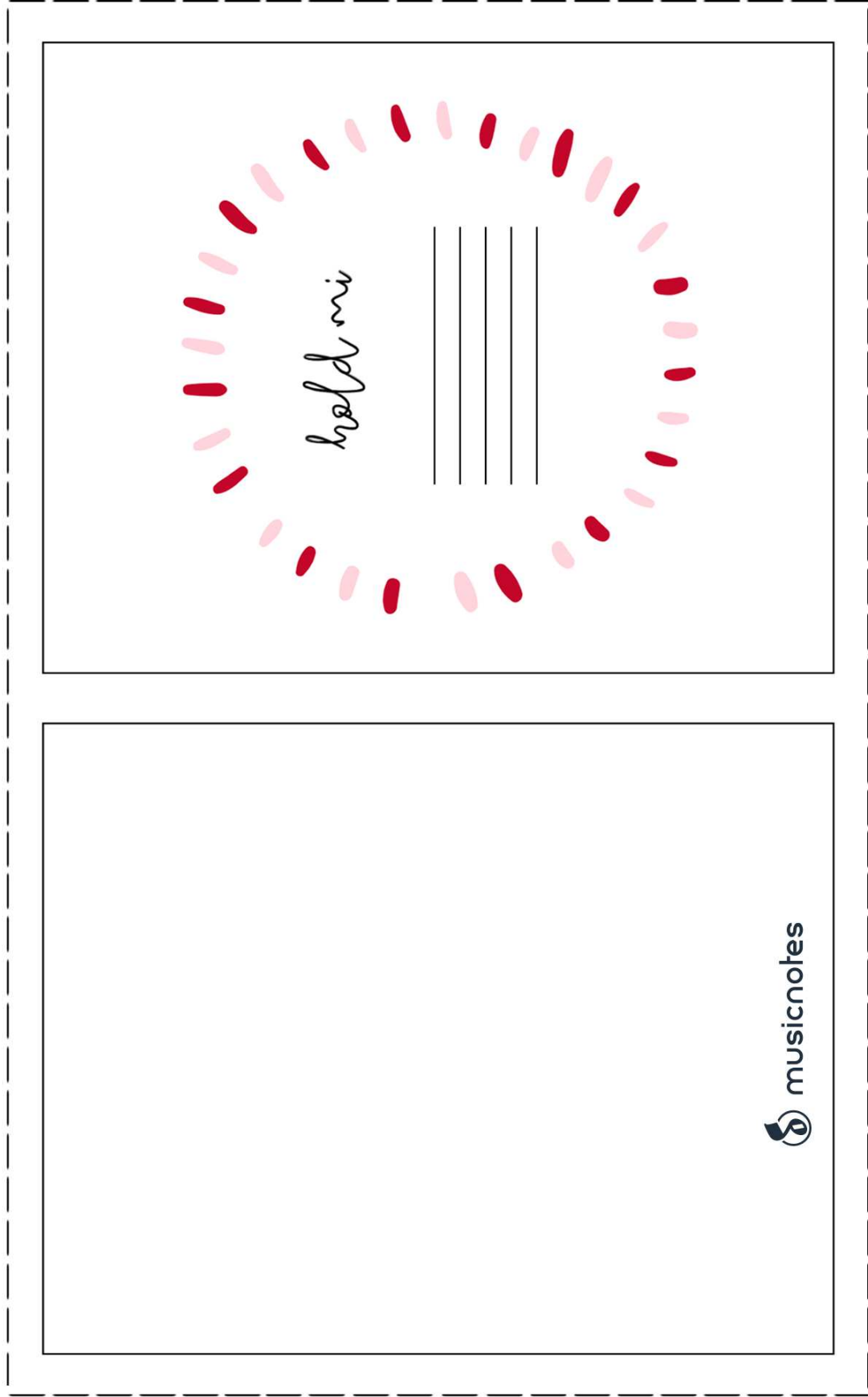


*you can bet on it*

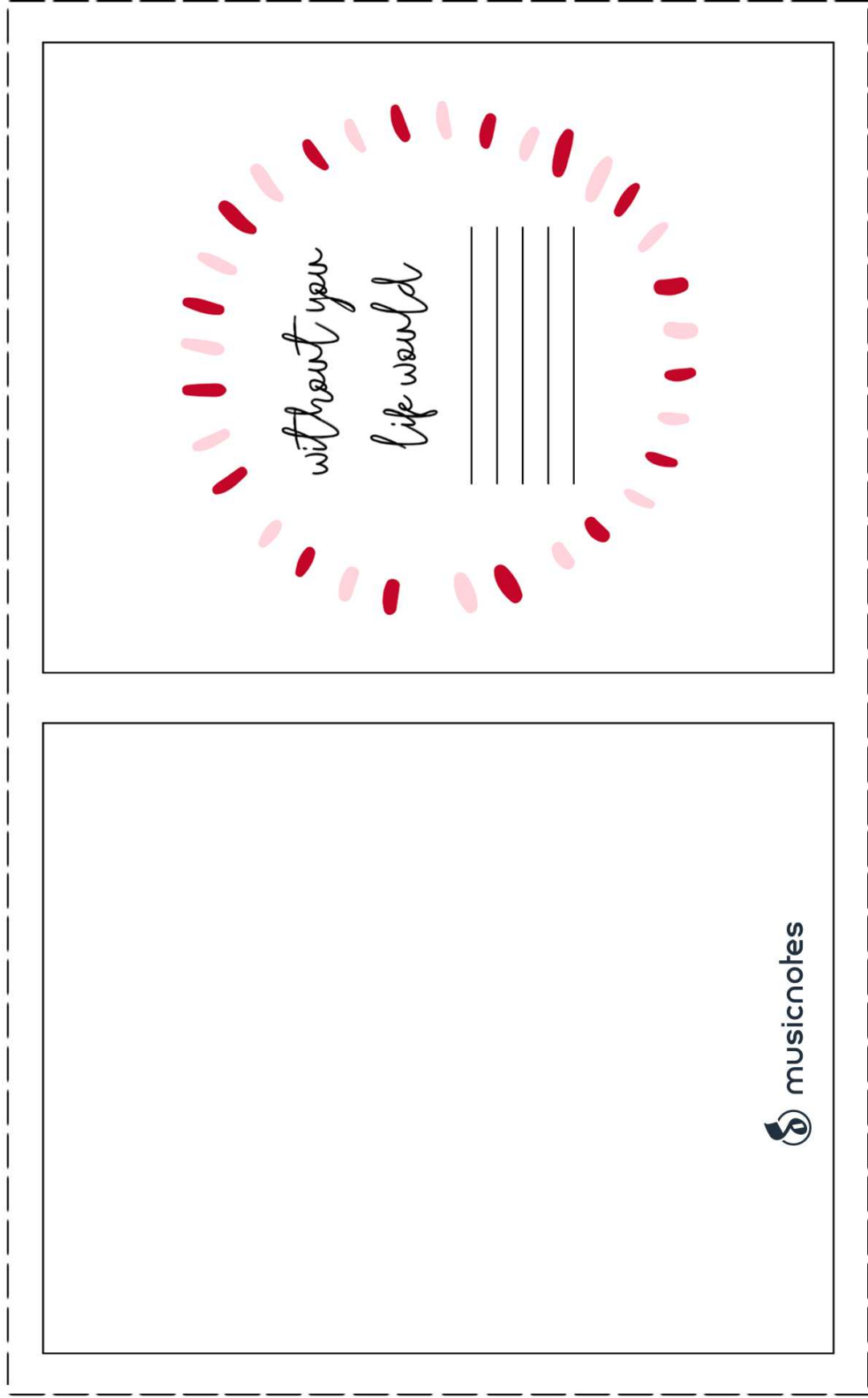
*For a more personal touch, use these cards with blank staves and draw in your own clefs, time signatures, and notes!*



*For a more personal touch, use these cards with blank staves and draw in your own clefs, time signatures, and notes!*



*For a more personal touch, use these cards with blank staves and draw in your own clefs, time signatures, and notes!*

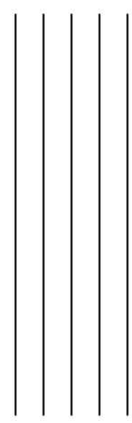




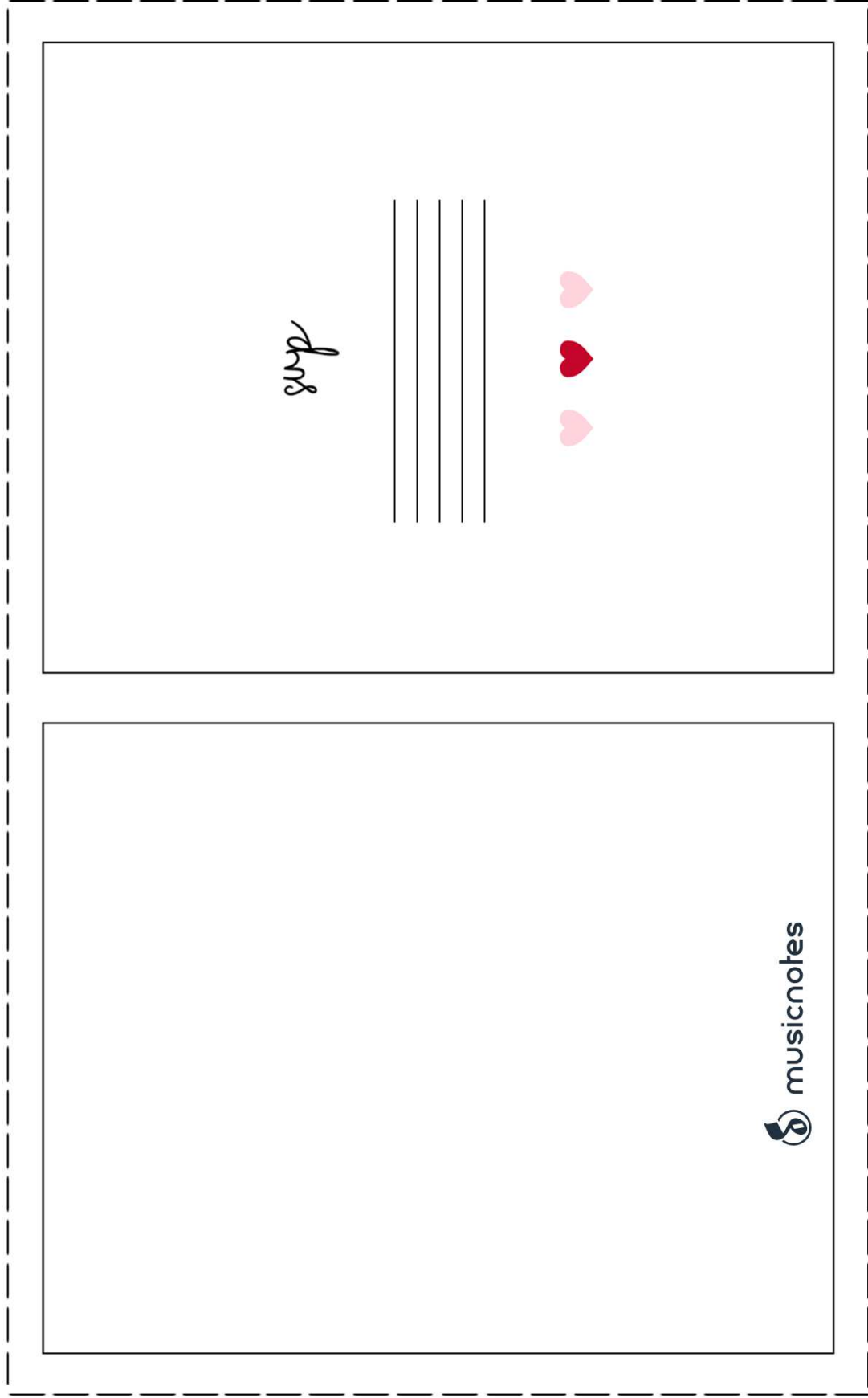
*For a more personal touch, use these cards with blank staves and draw in your own clefs, time signatures, and notes!*

A large dashed rectangular frame containing two smaller rectangular boxes. The right box contains the text "i like you", a five-line staff, and three hearts (two pink, one red). The left box is empty except for the "musicnotes" logo in the bottom right corner.

*i like you*



*For a more personal touch, use these cards with blank staves and draw in your own clefs, time signatures, and notes!*



The image shows a large dashed rectangular frame containing two smaller solid rectangular frames. The right frame contains musical staves, a signature, and hearts.

musicnotes

mus

